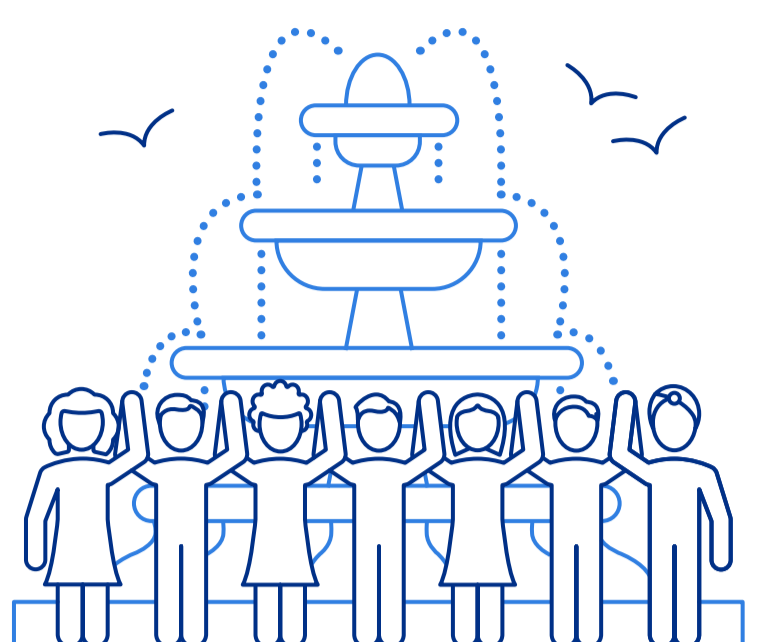


REALIZING SYNERGIES FOR GREATER COMMUNITY IMPACT



Children’s Mercy Kansas City knew that coordinating its many efforts would mean more progress improving community health at a faster rate.



It decided to create an Office for Community Impact, a new model for its community health initiatives.

This new team is responsible for the community health assessment, community benefit reporting, civic sponsorships, school health initiatives, as well as home and environmental health programming.

Wins will come from aligning community health improvement efforts across the entire organization.

Strategies:

- Connect internal programs.
- Support colleagues in their work.
- Reduce barriers and silos.
- Get people talking to one another.

Vision:

One team with one voice engaging the community.

Children’s Mercy is the only children’s hospital in the Kansas City area and one of the largest accountable care organizations for children in the U.S.

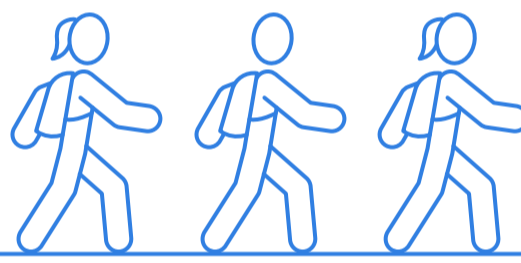
Past CHAs have consistently reported access to health care services, mental health, and violence as challenges.

Its most recent CHA revealed new risks to the community stemming from unsafe and insecure housing and neighborhood conditions.



Mental health referrals to Children’s Mercy have soared 67% in the past five years.

One year into the new model of coordinating its community efforts, several initiatives are underway:



BikeWalkKC expanded its Safe Routes to School program through a partnership and grant from Children’s Mercy that enabled built environment assessments for 20 additional schools, access to CHA data to create a community dashboard and better working relationships with local governments.



Kansas City



Children’s Mercy
KANSAS CITY

Blue Cross and Blue Shield of Kansas City and Children’s Mercy are piloting a school-based mental health program in an urban school district with an extremely high rate of depression and anxiety among K-12 students. Aimed at reducing suspensions and absenteeism, it provides training for school administrators and teachers, with plans to expand to other districts.



Greater Kansas City Coalition to End Homelessness and other community, government and health care partners received a \$2.4 million grant from the Department of Housing and Urban Development. Children’s Mercy lent its grant-writing expertise and shared data to support the proposal request process. The grant will go toward planning, designing and implementing new solutions to support youths experiencing homelessness.

“Caring for children and families extends beyond the walls of our hospitals and clinics, as we strive to develop healthy and safe communities for children to learn and grow. We work closely with community partners so that we can collectively grow our impact and improve the health and well-being of all children in our region.”



Austin Strassle
Manager, Community Benefit
Office for Community Impact
Children’s Mercy Kansas City