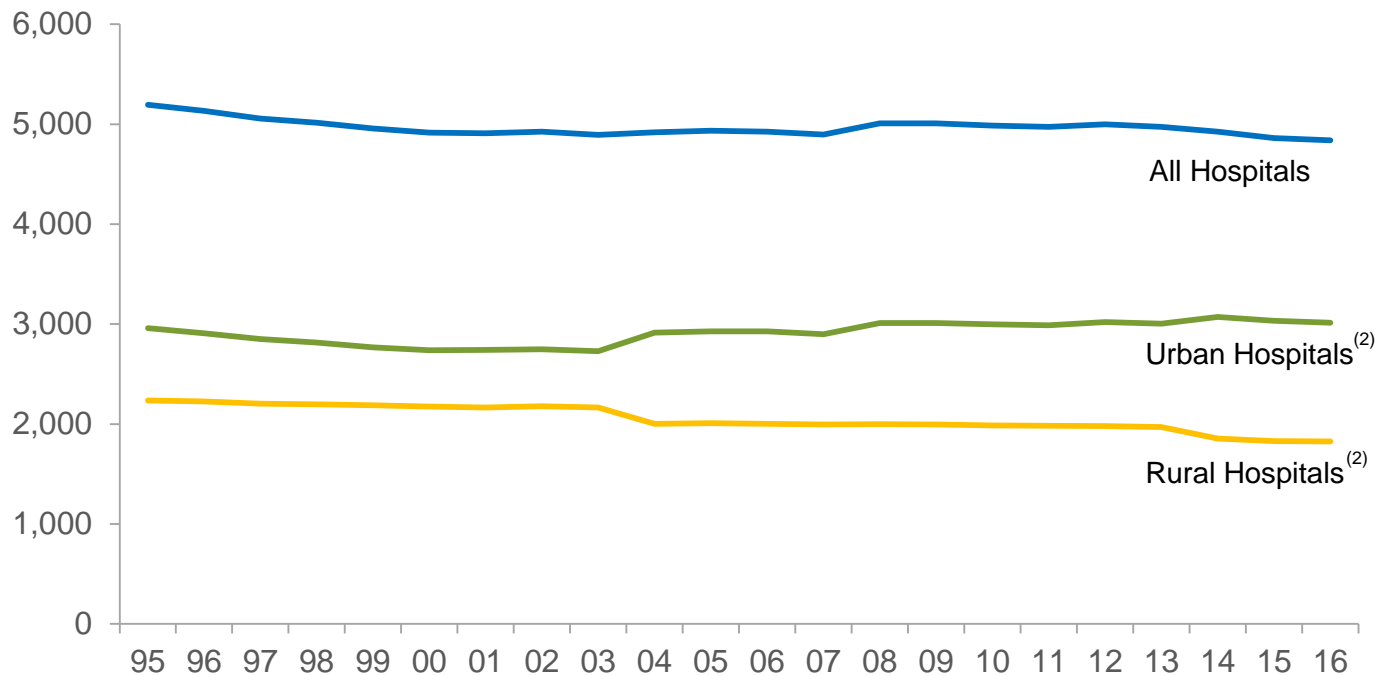


CHAPTER 2

Organizational Trends

Chart 2.1: Number of Community Hospitals,⁽¹⁾ 1995 – 2016

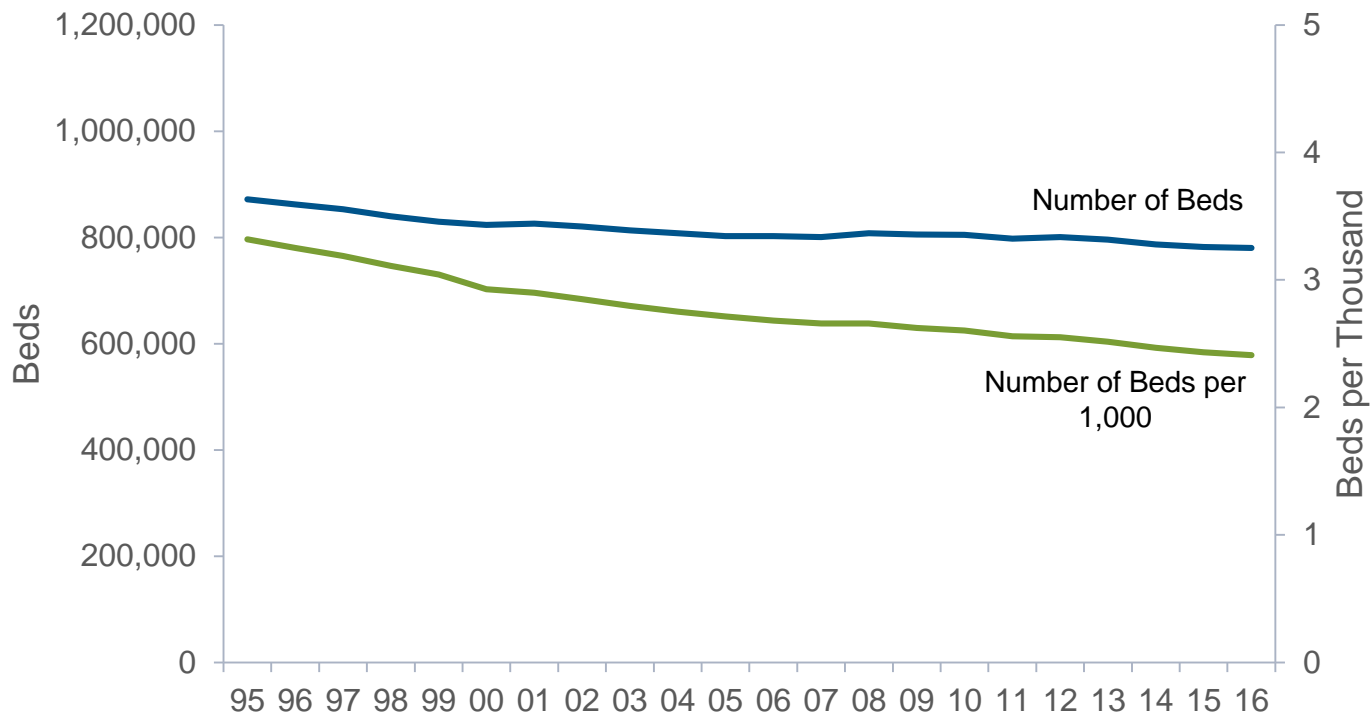


Source: Analysis of American Hospital Association Annual Survey data, 2016, for community hospitals.

⁽¹⁾ All non-federal, short-term general and specialty hospitals whose facilities and services are available to the public.

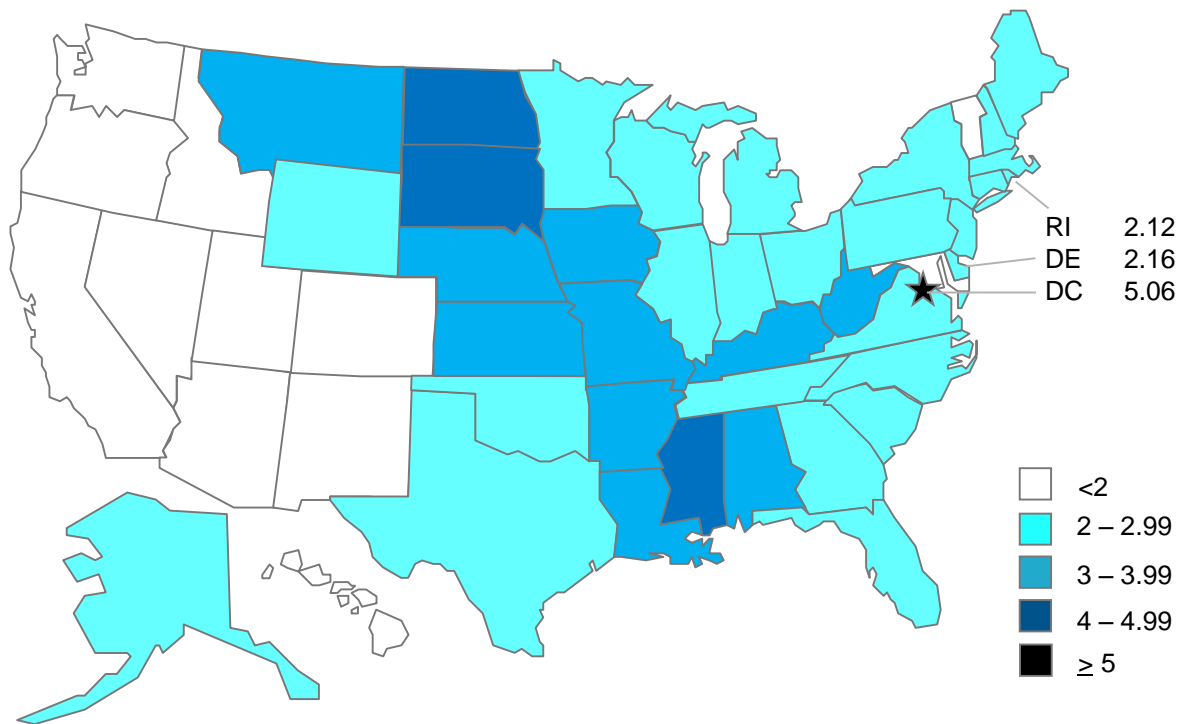
⁽²⁾ Data on the number of urban and rural hospitals in 2004 and beyond were collected using coding different from previous years to reflect new Centers for Medicare & Medicaid Services wage area designations.

Chart 2.2: Number of Beds and Number of Beds per 1,000 Persons, 1995 – 2016



Source: Analysis of American Hospital Association Annual Survey data, 2016, for community hospitals.

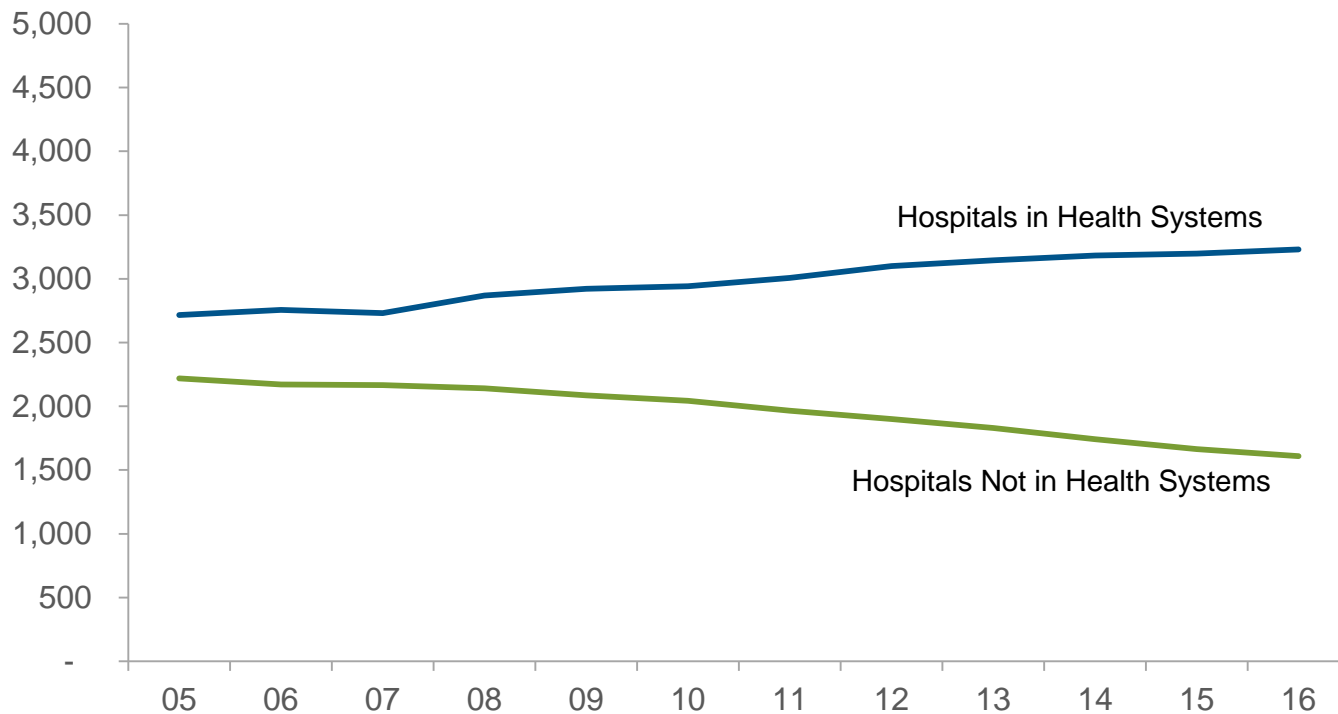
Chart 2.3: Beds per 1,000 Persons by State, 2016



Source: Analysis of American Hospital Association Annual Survey data, 2016, for community hospitals. US Census Bureau: National and State Population Estimates, July 1, 2016.

Link: <https://www.census.gov/data/datasets/2017/demo/popest/nation-detail.html>

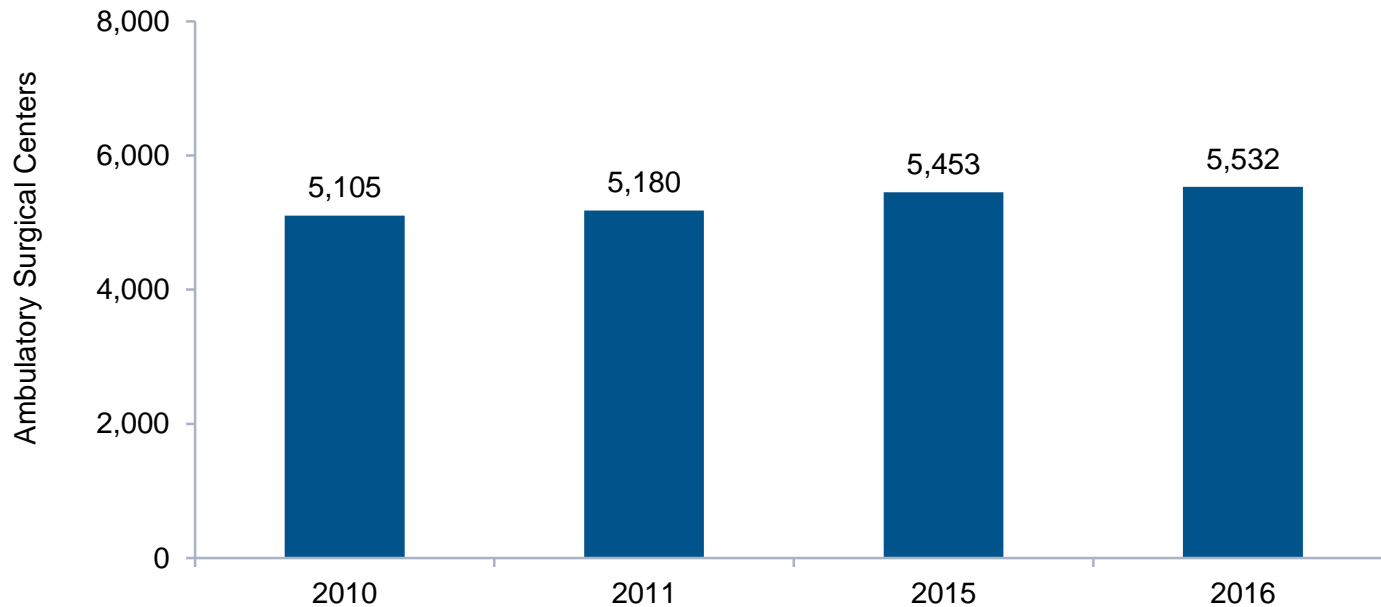
Chart 2.4: Number of Hospitals in Health Systems,⁽¹⁾ 2005 – 2016



Source: Analysis of American Hospital Association Annual Survey data, 2016, for community hospitals.

⁽¹⁾ Hospitals that are part of a corporate body that may own and/or manage health provider facilities or health-related subsidiaries as well as non-health-related facilities including freestanding and/or subsidiary corporations.

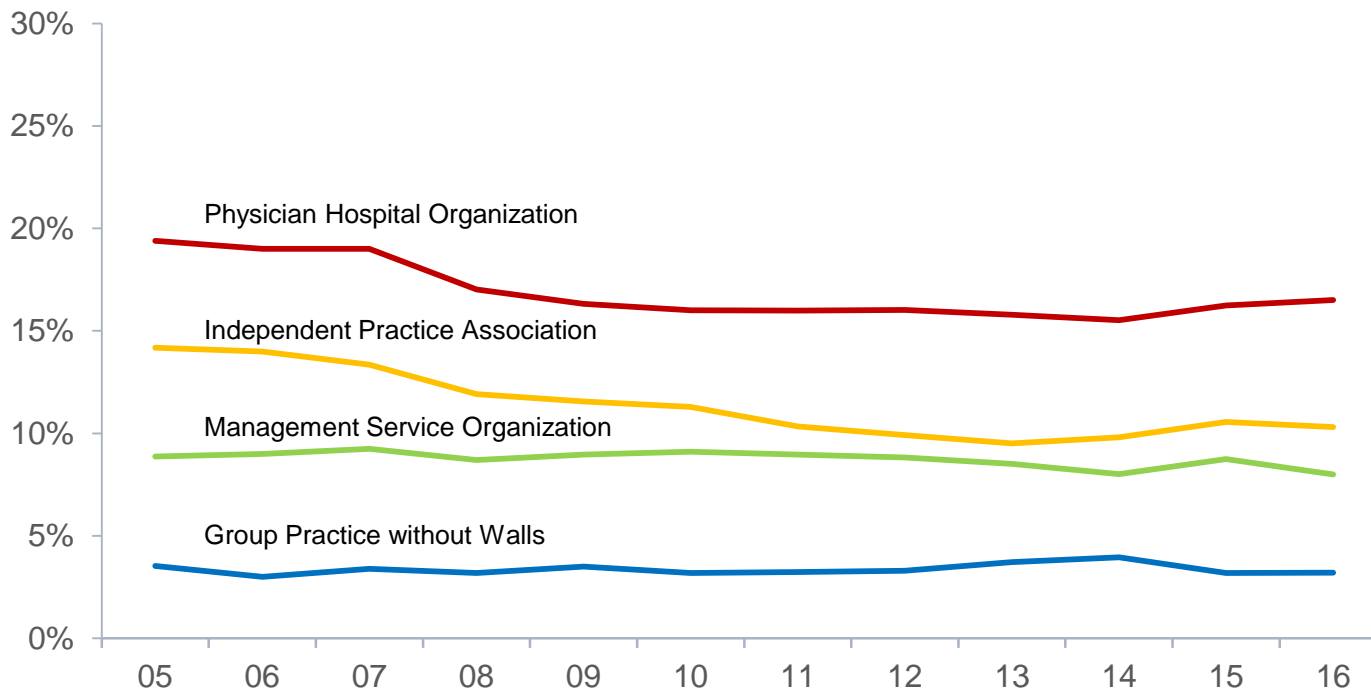
Chart 2.5: Number of Medicare-certified Ambulatory Surgical Centers, 2010, 2011, 2015, 2016



Source: Medicare Payment Advisory Commission. (March 2018). *Report to the Congress: Medicare Payment Policy*.

Link: http://www.medpac.gov/docs/default-source/reports/mar18_medpac_ch5_sec.pdf

Chart 2.6: Percentage of Hospitals with Physician Affiliates⁽¹⁾ by Type of Relationship, 2005 – 2016

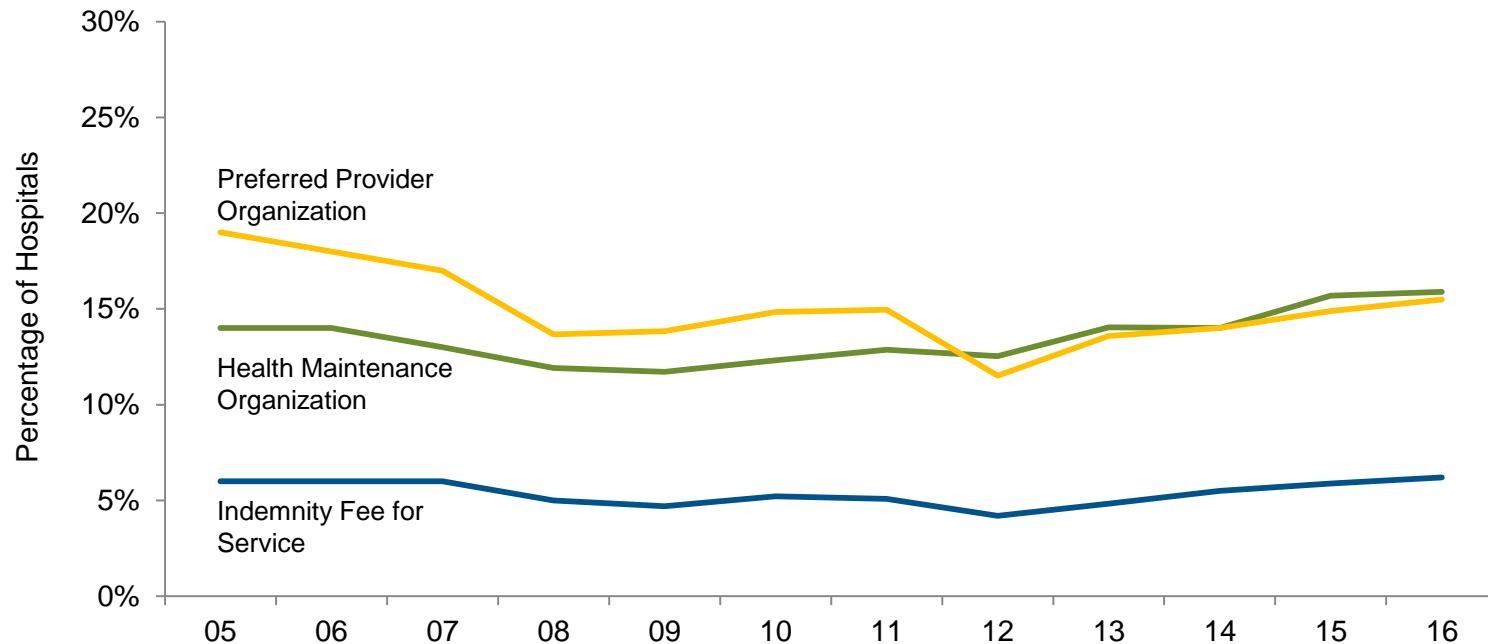


Source: Analysis of American Hospital Association Annual Survey data, 2016, for community hospitals.

⁽¹⁾ A hospital is considered to have a physician relationship if the relationship exists as part of the hospital or a system or network of which the hospital is a part.

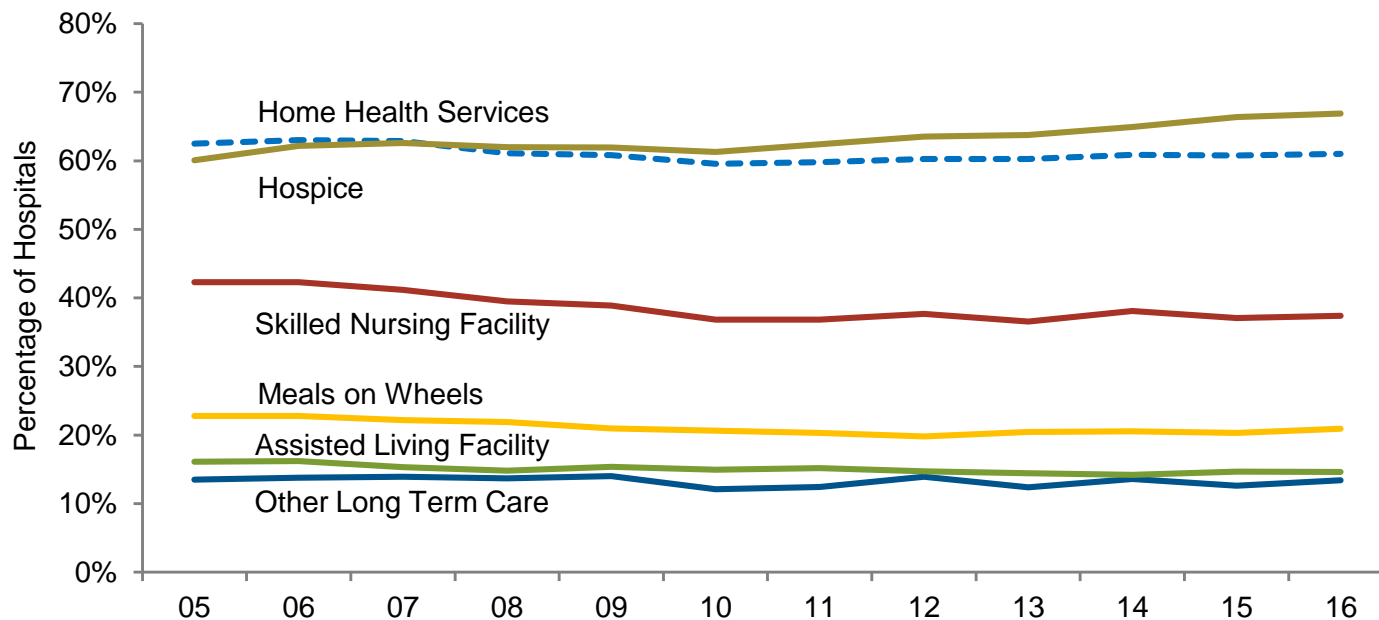
Chart 2.7 in 2009 and earlier years' Chartbooks.

Chart 2.7: Percentage of Hospitals with Insurance Products by Type of Insurance, 2005 – 2016



Source: Analysis of American Hospital Association Annual Survey data, 2016, for community hospitals. *Chart 2.8 in 2009 and earlier years' Chartbooks.*

Chart 2.8: Percentage of Hospitals Offering “Non-hospital” Services,⁽¹⁾ 2005 – 2016

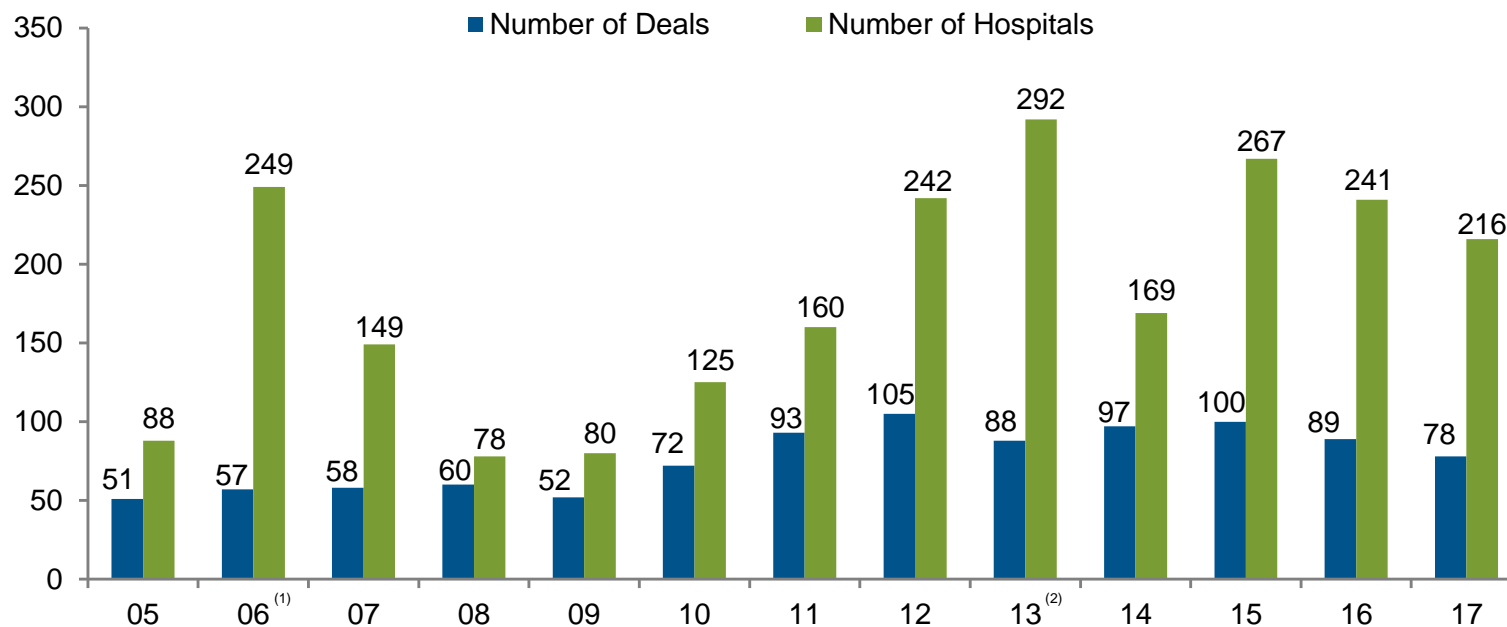


Source: Analysis of American Hospital Association Annual Survey data, 2016, for community hospitals.

⁽¹⁾ Includes services offered in hospital, health system, network or joint venture.

Chart 2.9 in 2009 and earlier years' Chartbooks.

Chart 2.9: Announced Hospital Mergers and Acquisitions, 2005 – 2017



Source: Irving Levin Associates, Inc. (2018). *The Health Care Services Acquisition Report*, Twenty-Fourth Edition.

(1) In 2006, the privatization of Hospital Corporation of America, Inc. affected 176 hospitals. The acquisition was the largest health care transaction ever announced.

(2) In 2013, consolidation of several investor-owned systems resulted in a large number of hospitals involved in acquisition activity *Chart 2.10 in 2009 and earlier year's Chartbooks..*